

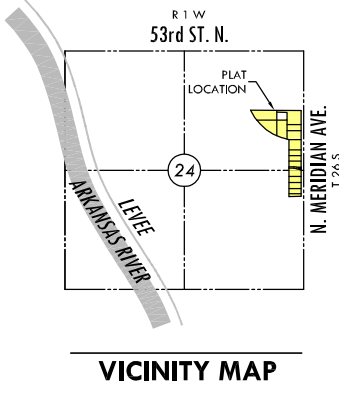
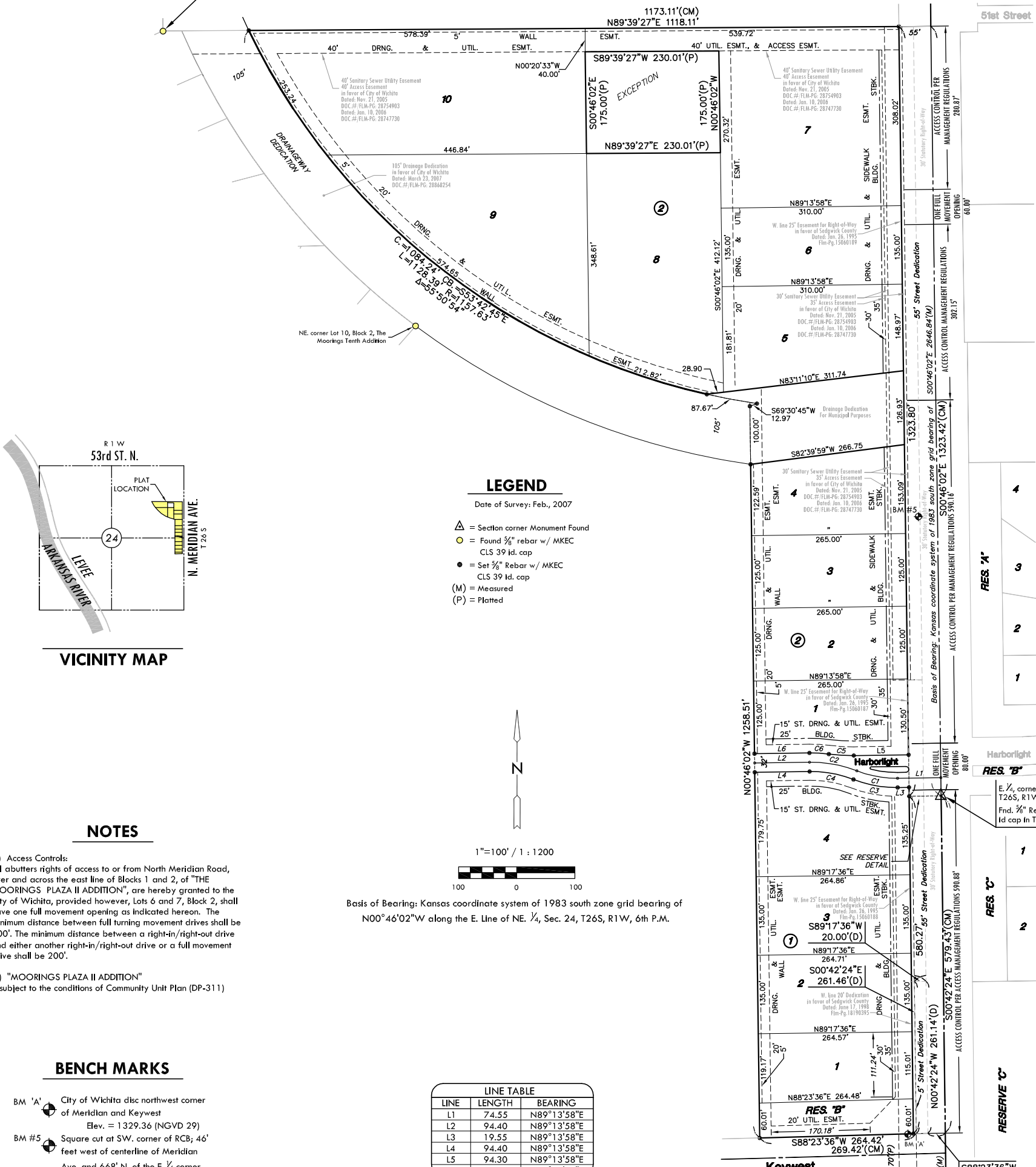
# FINAL PLAT

## THE MOORINGS PLAZA II ADDITION

### AN ADDITION TO WICHITA, SEDGWICK COUNTY, KANSAS

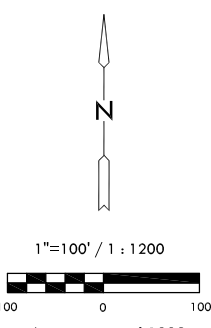
SW. corner NE 1/4, NE 1/4, Sec. 24, T26S, R1W, 6th P.M.  
SE. corner Lot 2, Block 2, The Moorings Tenth Addition  
Fnd. 3/8" rebar w/ MKEC CLS 39 Id cap

NE. Cor., NE 1/4, Sec. 24, T26S, R1W, 6th P.M.  
Fnd. 3/8" Rebar Garber Id cap in Thimble



#### LEGEND

- Date of Survey: Feb., 2007
- △ = Section corner Monument Found
  - = Found 3/8" rebar w/ MKEC CLS 39 Id. cap
  - = Set 3/8" Rebar w/ MKEC CLS 39 Id. cap
  - (M) = Measured
  - (P) = Platted



Basis of Bearing: Kansas coordinate system of 1983 south zone grid bearing of N00°46'02"W along the E. Line of NE 1/4, Sec. 24, T26S, R1W, 6th P.M.

#### NOTES

- Access Controls:  
All abutters rights of access to or from North Meridian Road, over and across the east line of Blocks 1 and 2, of "THE MOORINGS PLAZA II ADDITION", are hereby granted to the City of Wichita, provided however, Lots 6 and 7, Block 2, shall have one full movement opening as indicated hereon. The minimum distance between full turning movement drives shall be 400'. The minimum distance between a right-in/right-out drive and either another right-in/right-out drive or a full movement drive shall be 200'.
- "MOORINGS PLAZA II ADDITION" is subject to the conditions of Community Unit Plan (DP-311)

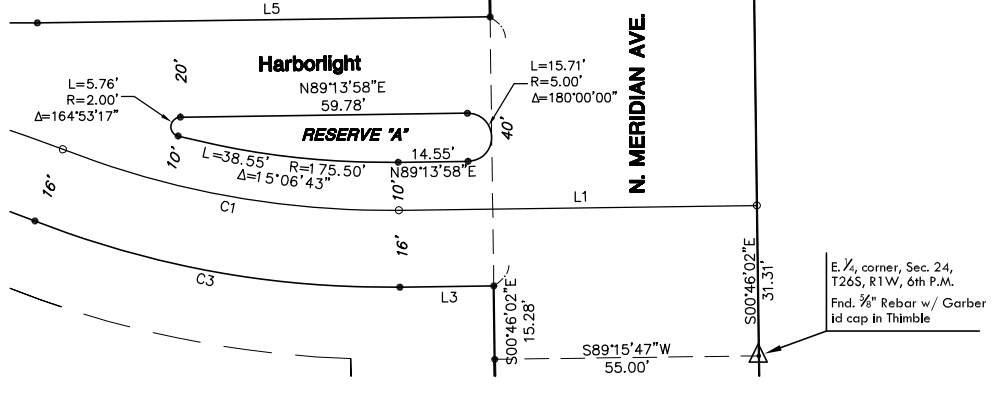
#### BENCH MARKS

- BM 'A' City of Wichita disc northwest corner of Meridian and Keywest  
Elev. = 1329.36 (NGVD 29)
- BM #5 Square cut at SW. corner of RCB; 46' feet west of centerline of Meridian Ave. and 668' N. of the E. 1/4 corner, Sec. 24, T26S, R1W.  
Elev. = 1328.19 (NGVD 29)

LINE	LENGTH	BEARING
L1	74.55	N89°13'58"E
L2	94.40	N89°13'58"E
L3	19.55	N89°13'58"E
L4	94.40	N89°13'58"E
L5	94.30	N89°13'58"E
L6	94.40	N89°13'58"E

CURVE	LENGTH	RADIUS	DELTA	CHORD	BEARING
C1	71.55	185.50	22°06'02"	71.11	S79°43'02"E
C2	83.32	216.00	22°06'02"	82.80	N79°43'02"W
C3	77.72	201.50	22°06'02"	77.24	S79°43'02"E
C4	77.15	200.00	22°06'02"	76.67	N79°43'02"W
C5	43.18	300.00	8°14'45"	43.14	S86°38'40"E
C6	33.39	232.00	8°14'45"	33.36	N86°38'40"W

MINIMUM PAD ELEVATIONS LOWEST OPENINGS		
LOTS	BLOCK	ELEVATION NGVD
4, 5, 8	2	1329.0



DETAIL RESERVE "A"  
1"=20'

**MKEC**  
ENGINEERING  
CONSULTANTS, INC.

411 N. WEBB ROAD  
WICHITA, KS. 67206  
316-684-9600

