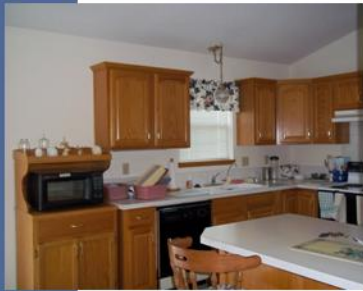


# \$149,999

## 924 E. Stetson

Year Built: 1994  
Oak Cabinetry  
Approx. 1,035 sq. ft. Main  
Approx. 1,008 sq. ft. Basement —  
Partial Finish (Bedroom & FR)  
Living Room: 18 x 15  
Kitchen/Breakfast Nook: 18 x 11  
Master Bedroom : 12 x 14.5  
Bedroom #2 (Main Level):  
10 x 10  
Bedroom #3: Bsmt—11.5x12  
Family Room: Bsmt—13.5x19.5  
2 Baths ( 1 up & 1 down)  
Central HVAC  
2 Car Garage  
Composition Roof  
Large Lot—10,354 sq. ft.  
partially fenced  
Room for Large RV  
Irrigation Well  
Maize Schools  
Website: [www.usd266.com](http://www.usd266.com)



General Tax: 1,920.74  
Specials: \$4.04

*Information deemed reliable but not guaranteed.*



"The Company Behind Outstanding Homes"

4647 N. Meridian,  
Wichita, KS 67204  
316-838-6789 Office  
316-838-1234 Fax

Custom Built Home in 1994, has beautiful oak cabinetry and woodwork throughout. 3 bedrooms, 2 up and 1 down, hall bath main floor and shower/bath in lower level. Main floor laundry. Bedroom in basement has a window well as well as the family room. Plenty of storage in this house, in basement and in garage attic! Nice workroom in basement perfect for hobbies and crafting. Lawn irrigation on private well and large backyard is partially fenced. Side of house perfect for RV parking, and storage shed for easy access. HVAC was replaced in 2008 and Water Heater in 2006. House has been well maintained and is in move in condition! Friendly neighborhood perfect for a family.

To Learn More or Schedule a Showing

Please Contact

**Nancy Stahl,**  
REALTOR®, ePro, CSP  
706-1260

[www.bachmanrealty.com](http://www.bachmanrealty.com)